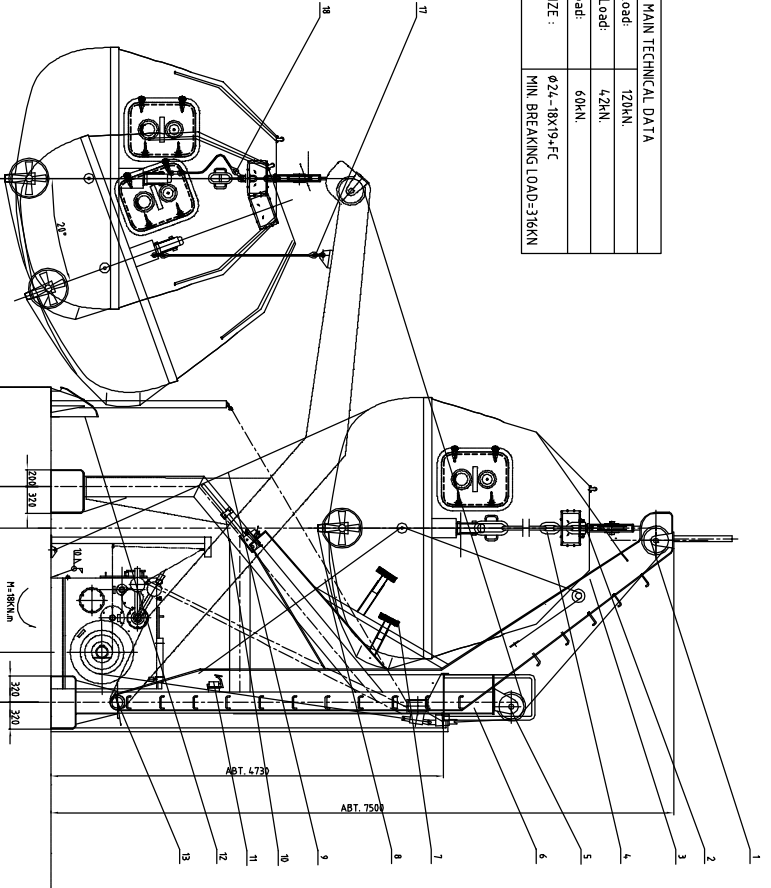


主要技术参数 MAIN TECHNICAL DATA	
最大工作载荷 Max. Working Load	120KN
最小输出负荷 Min. Throwing Load	4.2kN
回收输出负荷 Recovering Load	60kN
钢丝绳规格 ROPE SIZE	Φ24-18X19-FC
	MIN. BREAKING LOAD=316KN



1. THIS DAVIT IS COMPLIANCE WITH THE REQUIREMENT OF 96-AMENDMENT TO THE INTERNATIONAL CONVENTION FOR THE SAFETY OF LIFE AT SEA 1974-INTERNATIONAL CONVENTION FOR THE SAFETY OF LIFE AT SEA 1974-SOLAS AMENDMENT, ADOPTION OF THE INTERNATIONAL LIFE-SAVING APPLIANCE(CALL CODE, AMENDMENT OF MSC.218(82)) AND MSC.81(70) RESOLUTION, AMENDMENT OF MSC.226(82).

2. THIS DAVIT SHOWS THE PORTSIDE OF THE ARRANGEMENT IS SYMMETRICAL.

3. REMOTE CONTROL PULLEY(FIXED) TO BE WELDED BY SHIPYARD AT WORKSITE.

4. MARKED "W" THIS DRAWING TO BE WELDED BY SHIPYARD AT WORKSITE.

本设备符合 SOLAS 1974 及 96 修正条款要求。本设备符合 SOLAS 1974 及 96 修正条款要求。本设备符合 SOLAS 1974 及 96 修正条款要求。本设备符合 SOLAS 1974 及 96 修正条款要求。本设备符合 SOLAS 1974 及 96 修正条款要求。

NO.	CODE	NAME	QTY	UNIT	NOTE
22	ZB5N00-5-10	吊钩	1	ASSEMBLY	
21	JYB-DU-PP-02	吊钩操作板	1	H02	
20	SX70-GB867-96	吊钩	8	M12	
19	JYB-DU-PP-01	吊钩	1	H02	
18	ZB5N00-5-10	吊钩	2	ASSEMBLY	
17	ZB5N00-11-0	吊钩	2	ASSEMBLY	
16	ZB5N00-5-10	吊钩	1	ASSEMBLY	
15	ZB5N00-5-10	吊钩	1	ASSEMBLY	
14	ZB5N00-5-10	吊钩	2	ASSEMBLY	
13	ZB5N00-5-10	吊钩	2	ASSEMBLY	

NO.	CODE	NAME	QTY	UNIT	NOTE
12	ZB5N00-5-10	吊钩	2	ASSEMBLY	
11	ZB5N00-5-10	吊钩	2	ASSEMBLY	
10	ZB5N00-5-10	吊钩	2	ASSEMBLY	
9	ZB5N00-5-10	吊钩	2	ASSEMBLY	
8	ZB5N00-5-10	吊钩	2	ASSEMBLY	
7	ZB5N00-5-10	吊钩	2	ASSEMBLY	
6	ZB5N00-5-10	吊钩	2	ASSEMBLY	
5	ZB5N00-5-10	吊钩	2	ASSEMBLY	
4	ZB5N00-5-10	吊钩	2	ASSEMBLY	
3	ZB5N00-5-10	吊钩	2	ASSEMBLY	
2	ZB5N00-5-10	吊钩	2	ASSEMBLY	
1	ZB5N00-5-10	吊钩	2	ASSEMBLY	

设计/设计日期		设计/设计日期	
审核/审核日期		审核/审核日期	
批准/批准日期		批准/批准日期	
日期	2019.3	日期	2019.3

2019年3月

2019年3月

2019年3月

2019年3月

2019年3月

设备名称	2019 GRAVITY LIFTING ARM TYPE DAVIT
设备代码	ZB5N00-00
设备名称	2019 GRAVITY LIFTING ARM TYPE DAVIT
设备代码	ZB5N00-00