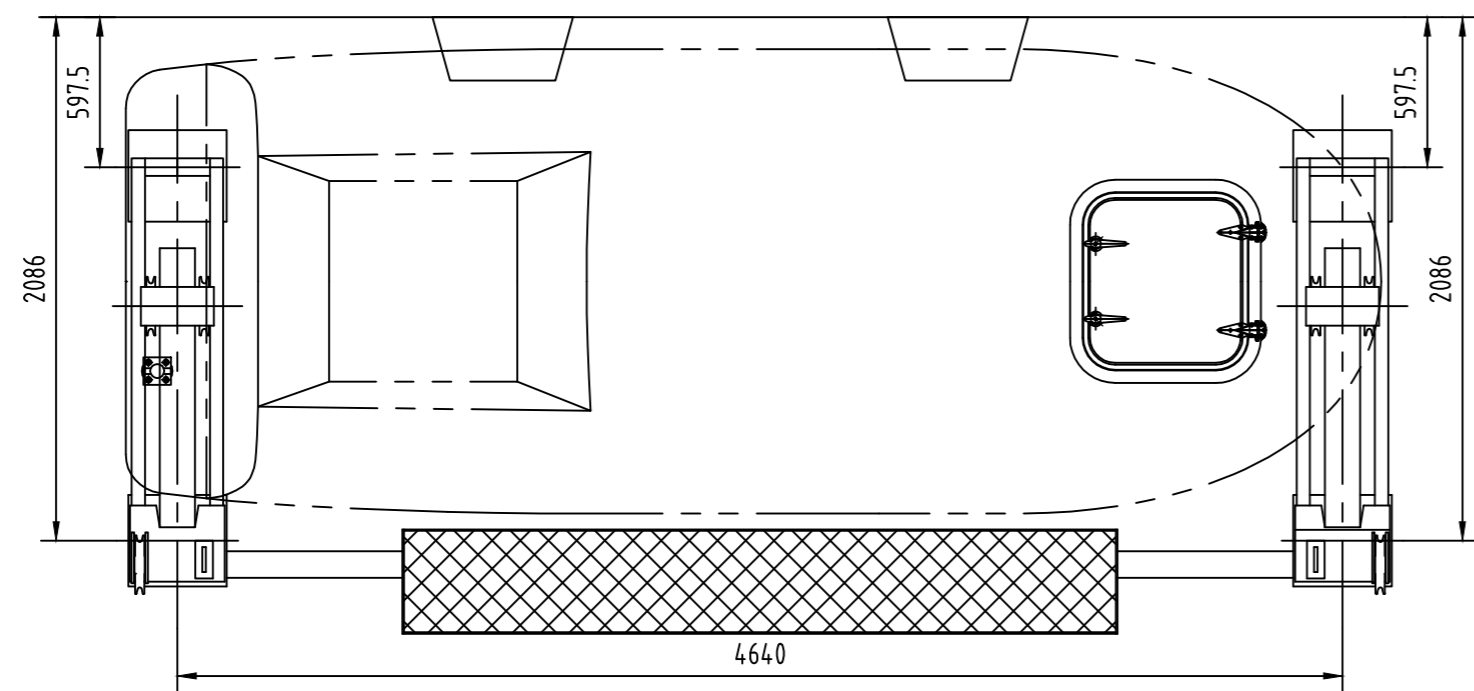
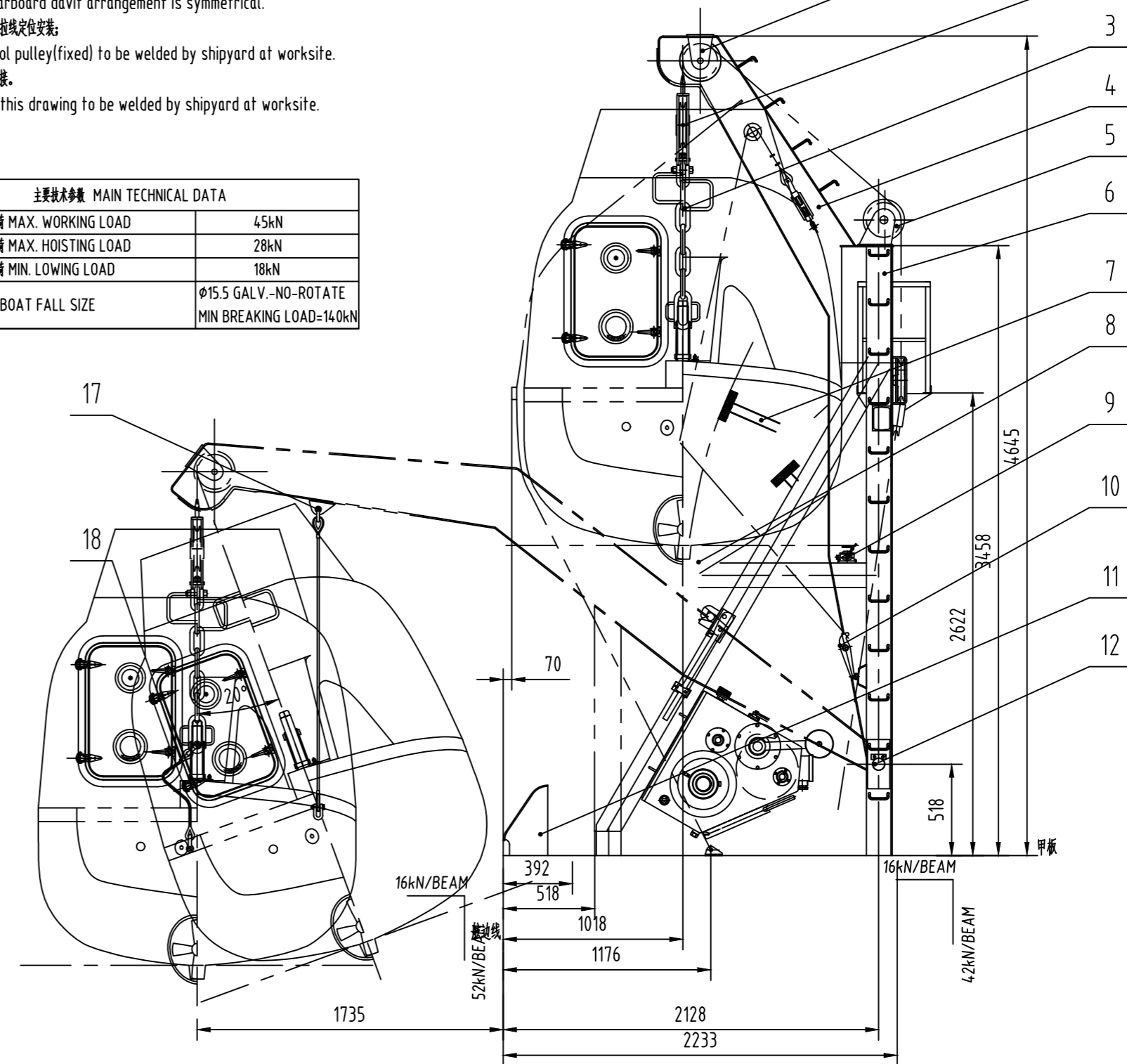
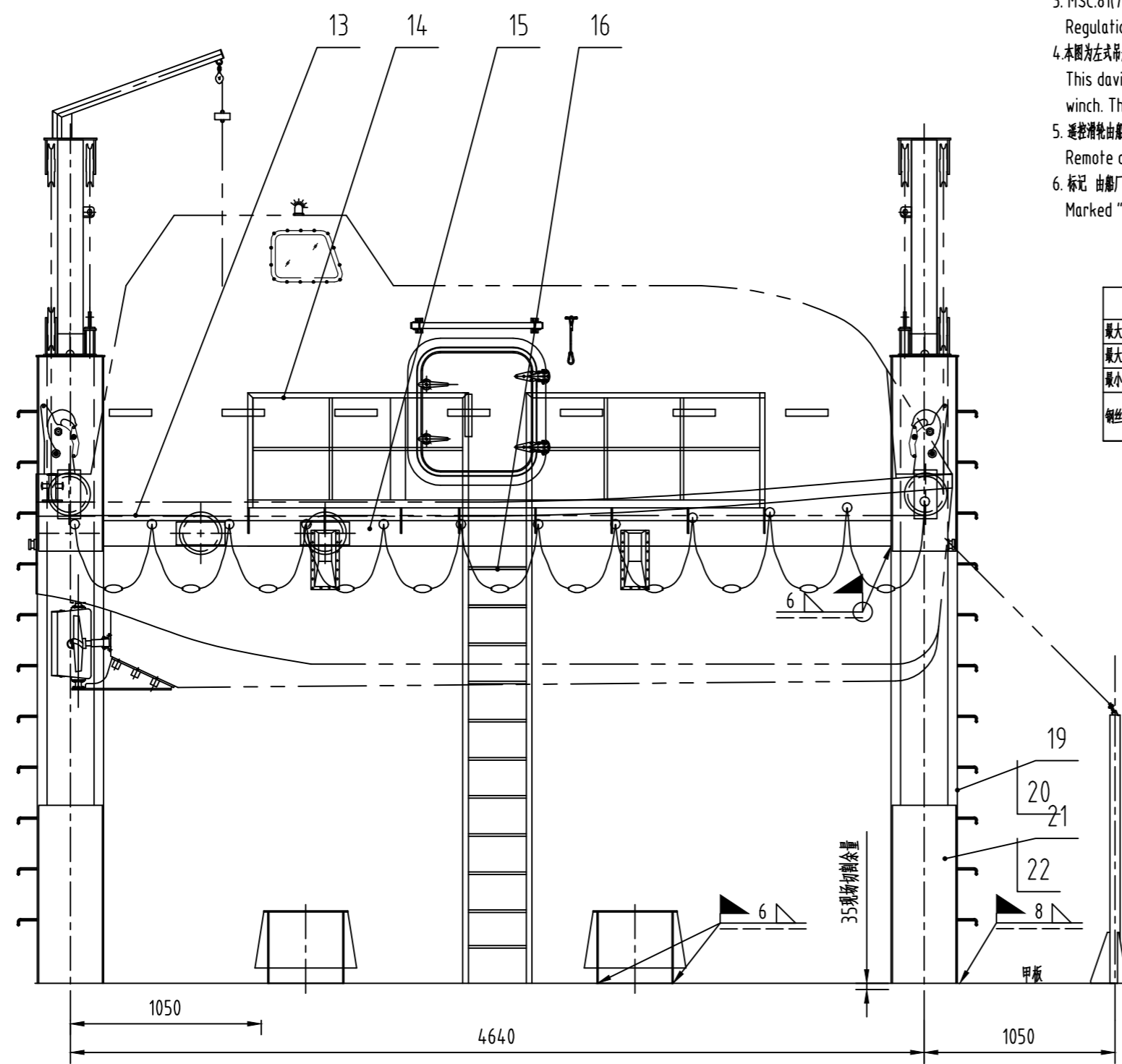


- MSC.47(66)《1974年国际海上人命安全公约1996修正案》及MSC.216(82),第III章
Chapters III of MSC.47(66)-1996 Amendments of the International Convention for the Safety of Life at Sea 1974, as amended by MSC.216(82)
- MSC.48(66)《国际救生设备规则》及MSC.218(82),第VI章
Chapters VI of MSC.48(66) the International Life-saving Appliance Code, as amended by MSC.218(82)
- MSC.81(70)《经修正的救生设备试验建议》及MSC.226(82),第一部分第8条,第二部分第6条
Regulations 6, parts 2, Regulations 8, parts 1 of MSC.81(70) Revised Recommendation on Life-saving Appliances, as amended by MSC.226(82)
- 本图为左式吊艇架,配左式放艇,右式艇架对称制造;
This davit shows the portside of the arrangement with left lifeboat
The starboard davit arrangement is symmetrical.
- 遥控滑轮由船厂现场拉线定位安装;
Remote control pulley(fixed) to be welded by shipyard at worksite.
- 标记“ ”在船厂现场焊接。
Marked " " in this drawing to be welded by shipyard at worksite.

主要技术参数 MAIN TECHNICAL DATA	
最大工作负荷 MAX. WORKING LOAD	45kN
最大起升负荷 MAX. HOISTING LOAD	28kN
最小下放负荷 MIN. LOWING LOAD	18kN
钢丝绳规格 BOAT FALL SIZE	φ15.5 GALV.-NO-ROTATE MIN BREAKING LOAD=14.0kN



序号	代号	名称	数量	材料	单件重量	总计重量	备注
7	215NM237-07	支撑杆SUPPORT ROD	2	ASSEM	7	14	
6	215NM237-06-0	座架DAVIT FRAME	2	ASSEM	330	660	
5	215NM237-05-0	座架滑轮 FRAME TACKLE	2	ASSEM	27	54	
4	215NM237-04-0	吊臂DAVIT ARM	2	ASSEM	270	540	
3	215NM237-03-0	吊链BOAT CHAIN	2	ASSEM	27	54	
2	215NM237-02-0	浮动滑轮FLOATING TACKLE	2	ASSEM	45	90	
1	215NM237-01-0	头部滑轮HEAD TACKLE	2	ASSEM	34	68	

22	GB/T 867-1986	铆钉 2.5X5RIVET	4	ML2				15	215NM237-15	横梁BEAM	1	Q235A	110	110	
21	215NM237-20	铭牌NAME PLATE	1	1Cr18Ni9Ti				14	215NM237-14	路台PLATERORM	1	ASSEM	138	138	
20	GB/T 867-1986	铆钉 2.5X5RIVET	4	ML2				13	215NM237-13-0	船架滑轮BOAT FALL&REMOTE UNIT	1	ASSEM	135	135	
19	215NM237-19	操作指示牌OPERATION PLATE	1	1Cr18Ni9Ti	0.27	0.27		12	215NM237-12-0	转动轴装置POVIT UNIT	2	ASSEM	41	82	
18	215NM237-18-0	回收索RECOVERY ROPE	2	ASSEM	4	8		11	215NM237-11	滑道SKID	2	ASSEM	31	62	
17	215NM237-17	悬挂装置HANGING-OFF UNIT	2	ASSEM	7	14		10	215NM237-10-0	系艇装置FASTENING UNIT	2	ASSEM	22	44	
16	215NM237-16	直梯LADDER	1	ASSEM	19	19		9	215NM237-09-0	限位装置LIMIT UNIT	2	ASSEM	4	8	
								8	215NM237-08-0	止动装置STOP UNIT	2	ASSEM	23	46	

45kN重力倒臂式吊艇架
45kN GRAVITY LUFFING ARM DAVIT

总布置图
GENERAL ARRANGEMENT

215NM247-00

215NM247-00 总图 Rev01

宁波新海业救生设备有限公司
NINGBO NEW MARINE LIFESAVING EQUIPMENT CO., LTD

借通用件登记
描图
校核
旧底图号
签字
日期