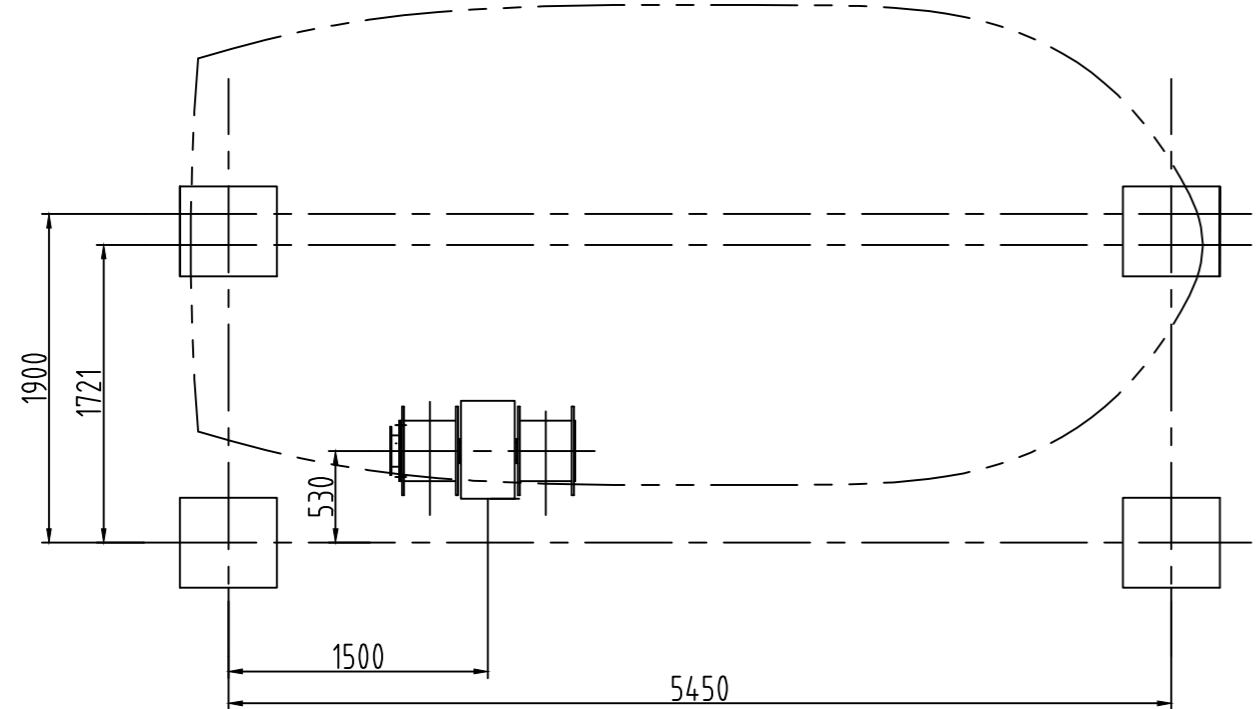
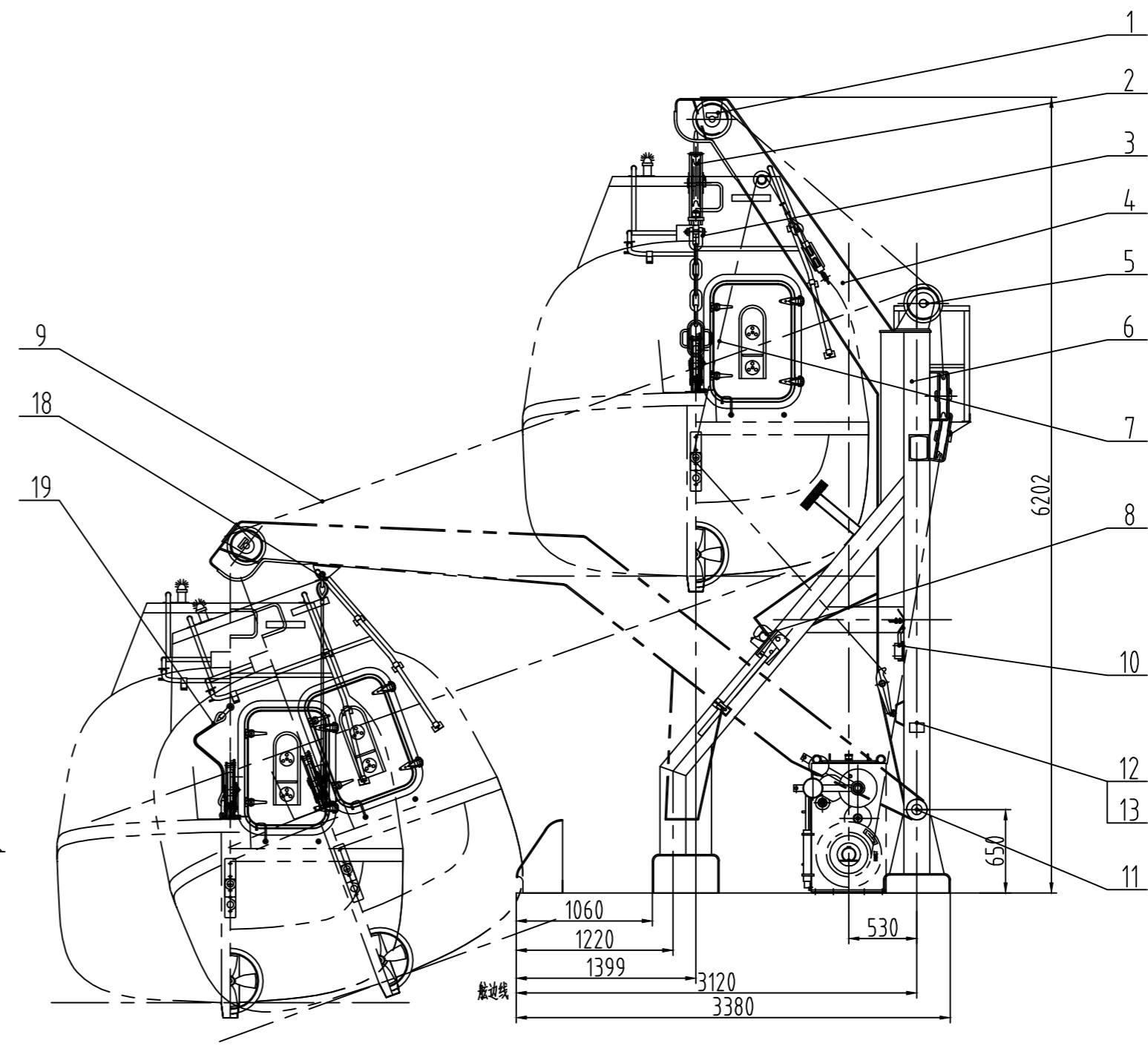
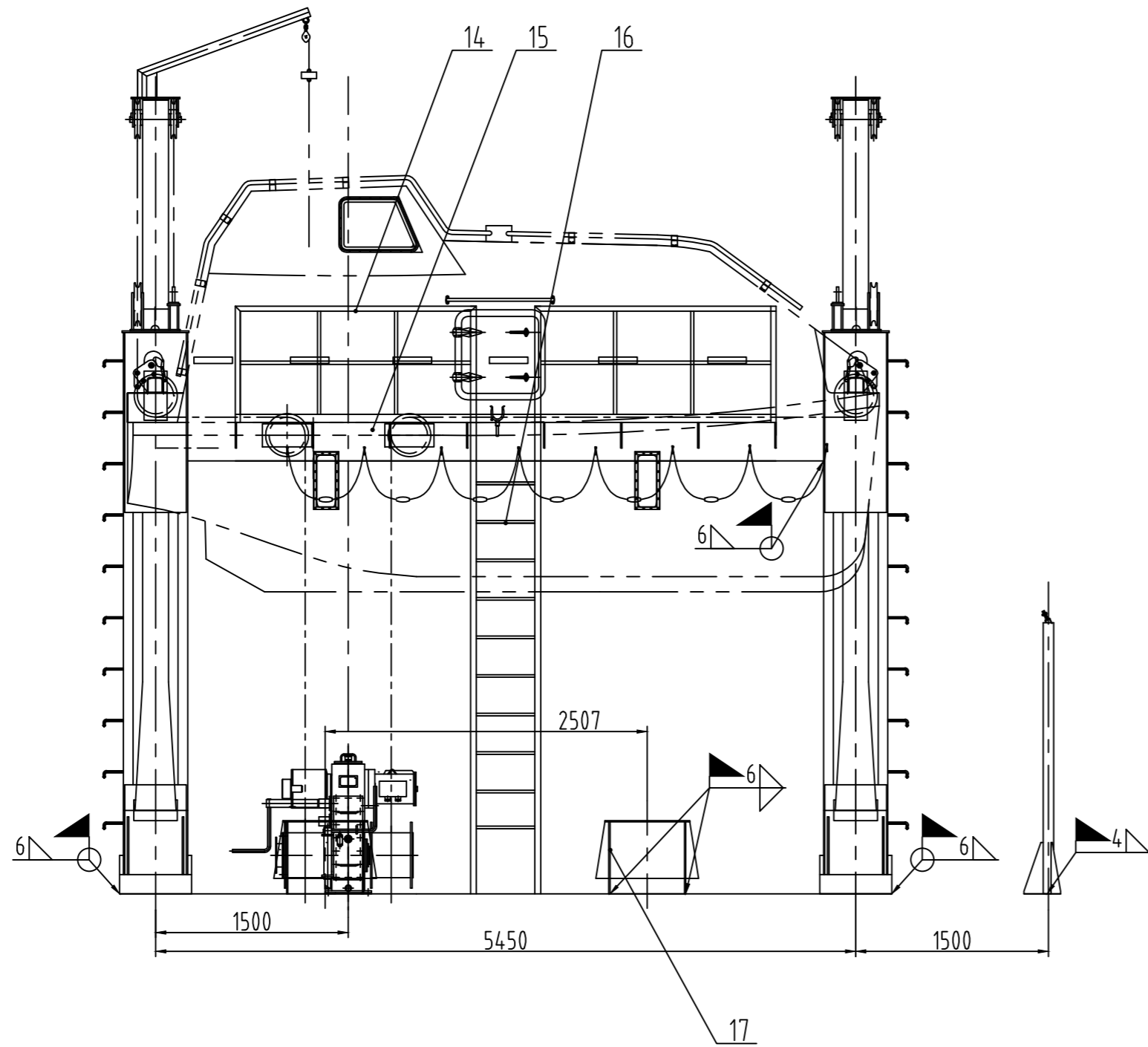


00-9EZWNSLZ



技术说明

- MSC.47(66)《1974年国际海上人命安全公约1996修正案》及MSC.216(82),第III章
Chapters III of MSC.47(66)-1996 Amendments of the International Convention for the Safety of Life at Sea 1974, as amended by MSC.216(82)
- MSC.48(66)《国际救生设备规则》及MSC.218(82),第VI章
Chapters VI of MSC.48(66) the International Life-saving Appliance Code, as amended by MSC.218(82)
- MSC.81(70)《经修正的救生设备试验建议》及MSC.226(82),第一部分第8条,第二部分第6条
Regulations 6, parts 2, Regulations 8, parts 1 of MSC.81(70) Revised Recommendation on Life-saving Appliances, as amended by MSC.226(82)
- 本图为左式吊艇架,配左式绞车,右式艇架对称制造;
This davit shows the portside of the arrangement with left lifeboat winch. The starboard davit arrangement is symmetrical.
- 遥控滑轮由船厂现场按线定位安装;
Remote control pulley(fixed) to be welded by shipyard at worksite.
- 标记"■"由船厂现场焊接。
Marked "■" in this drawing to be welded by shipyard at worksite.

序号	代号	名称	数量	材料	单件重量	总计重量	备注
11	215NM236-11-0	转动轴装置 Pivot device	2	ASSEM	81.5	163	
10	215NM006-11-0	限位装置	2	ASSEM	2.2	4.4	备用
9	215NM236-09-0	船舷控制缆 Boat fall & remote control wire rope	1	ASSEM	334.86	334.86	
8	215NM236-08-0	止动装置 Stop unit	2	ASSEM	32.85	65.7	
7	215NM236-07-0	系艇装置 Fasten unit	2	ASSEM	25.2	50.4	
6	215NM236-06-0	座架 Frame	2	ASSEM	737.4	1474.8	
5	215NM236-05-0	座架滑轮 Guide tackle	2	ASSEM	57.2	114.4	
4	215NM236-04-0	吊臂 Davit arm	2	ASSEM	539.17	1078.34	
3	215NM236-03-0	吊链 Boat chain	2	ASSEM	13.33	26.66	
2	215NM236-02-0	浮动滑轮 Floating tackle	2	ASSEM	60.27	120.54	
1	215NM236-01-0	头部滑轮 Head tackle	2	ASSEM	38.93	77.86	

19	215NM236-13-0	回收索 Recovery unit	2	ASSEM	7.63	15.26	
18	215NM236-12	悬挂装置 Hanging unit	2	ASSEM	7.03	14.06	
17	215NM006-12	滑道	2	Q235A	57	114	备用
16	215NM006-19	直梯 Ladder	1				
15	215NM404-11	横梁	1	Q235A	340	340	
14	215NM404-10	平台 Platform	1	ASSEM	138.64	138.64	
13	GB/T 867-1986	铆钉 2.5X5RIVET	4	ML2			
12		铭牌	1	SUS304/H62			

主要技术参数 MAIN TECHNICAL DATA	
最大工作负荷 MAX. WORKING LOAD	65kN
最大起升负荷 MAX. HOISTING LOAD	42kN
最小下放负荷 MIN. LOWING LOAD	27kN
钢丝绳规格 BOAT FALL SIZE	φ20 GALV.-NO-ROTATE MIN BREAKING LOAD=219kN

借通用件登记

插图

校核

旧底图号

签字

日期

MARK	QTY	SIGNATURE	MARK	QTY	SIGNATURE	PROJ. NAME	65kN重力倒臂式吊艇架
DESIGNED		袁均	MATERIAL	ASSEM			
CHECKED		蒋良峰	WEIGHT(kg)	4132.92		DWG. NAME	吊臂 DAVIT ARM
VERTIFIED		徐建新	SCALE	1:40			
DATE	2016_09	REVISION NO.	Rev01			PROJECTION	DWG. No. 215NM236-00
NINGBO NEW MARINE LIFESAVING EQUIPMENT CO.,LTD							

1

2

3

4

5

6

A

B

C

D

E

F

G

H