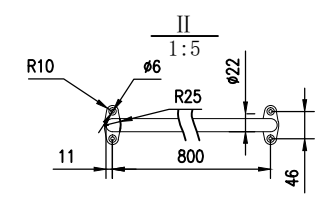
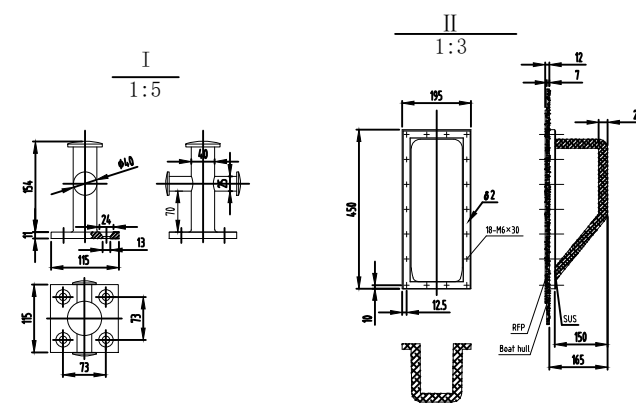
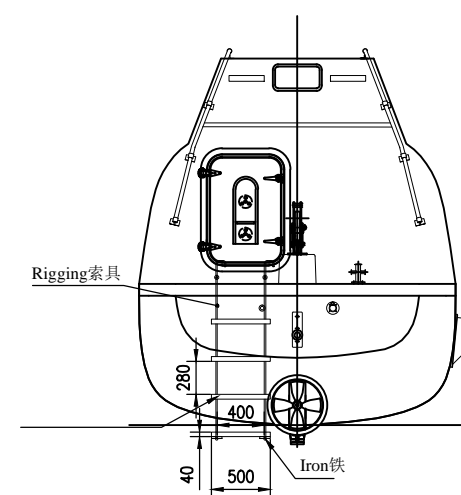
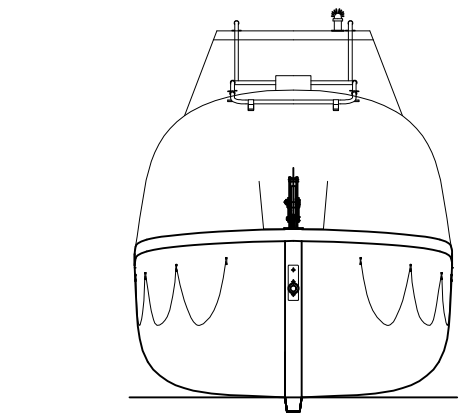
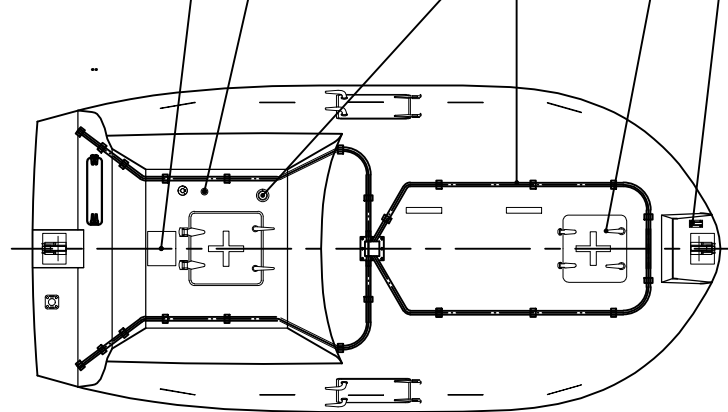
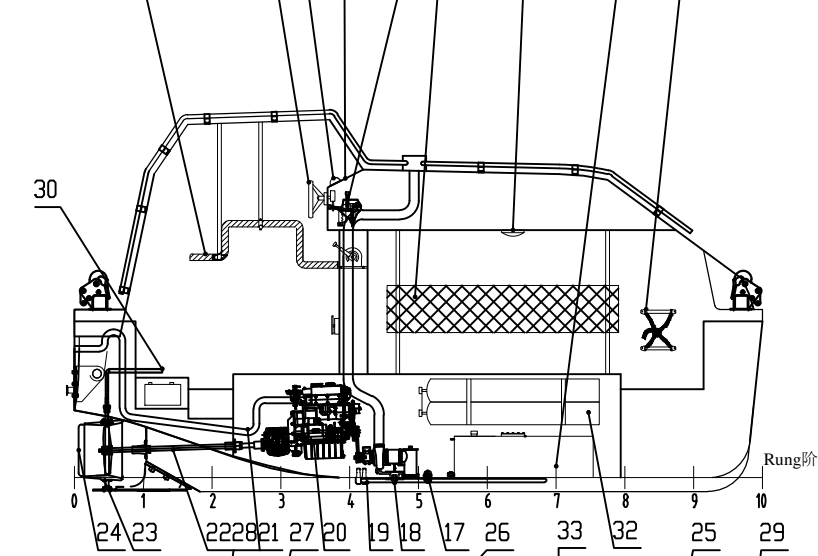
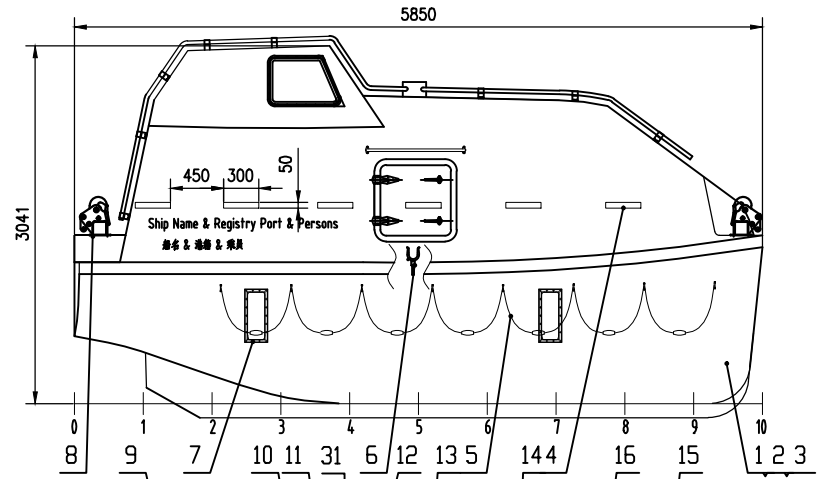


00-90EWNLLZ



MANIN MPARTICLAS
 Length 艇长 5.85m
 Breadth (mld) 艇宽 2.78m
 Depth 艇深 1.20m
 Height O.A 总高 3.05m
 Hook Distance 钩距 5.45m
 Design draft 设计吃水 0.67m
 No. Of persons 乘员 42P
 Light Weight 空载 3050Kg
 Total Weight 总重 6515Kg
 Speed 航速 ≥6 Knots
 As rescue boat 作救助艇时乘员 6 P (人)]

NOTE1: Meet the international safety of life at sea, SOLAS convention 96 amendment MSC. 47 (66), MSC. 216 (82), MSC. 317 (89), the international life-saving appliances rules (LSA) MSC. 48(66), MSC. 218 (82), MSC. 272 (85), MSC. 320 (89) amendment, applicable requirements for the life-saving appliances test MSC. 81 (70), MSC. 226 (82), MSC. 274 (85), MSC. 321 (89), MSC. 323 (89) amendment.

NOTE2: The 380J-3 engine is as main engine of the lifeboat, it is able to satisfy the 4.4.6.1 of LSA Code, having whole series of certifications.

注意1: 满足国际海上人命安全SOLAS公约96修正案MSC. 47(66)、MSC. 216(82)、MSC. 317(89)、国际救生设备规则(LSA) MSC. 48(66)、MSC. 218(82)、MSC. 272(85)、MSC. 320(89)修正案, 救生设备试验MSC. 81(70)、MSC. 226(82)、MSC. 274(85)、MSC. 321(89)、MSC. 323(89)修正案的有关要求。

注意2: 主机380J-3, BUKH DV29RME YANMAR符合4.4.6.1, 有相应的证书。

26	TJ-4701	雷达反射器 Radar reflector	1	ASSEM					
25	271NM306-17-0	门窗及盖 Door, windows & Cover	1	ASSEM					
24	271NM306-16	导流管保护罩 Cover	1	SUS304					
23	271NM306-15	导流管舵 Rudder	1	ASSEM					
22	271NM306-14-0	推进系统 Powersystem	1	ASSEM					
21	271NM306-13-0	排气系统 Exhaust system	1	ASSEM					
20		艇机 Engine	1	ASSEM					
19		冷却系统 Cooling system	1	ASSEM					
18	271NM306-12-0	静水压释放器 hydrostatic release	1	ASSEM					
17	271NM306-11	排水系统 Drain system	1	ASSEM					
16	271NM306-10-0	燃油系统 Fuel system	1	ASSEM					
15		安全带 Safety belt	45	ASSEM					
14	CCD12	舱内灯 Cabin light	2	ASSEM					
13	271NM306-08	靠背 Backrest	1	ASSEM					
12	WS97-B0H12V/80	探照灯 Search light	1	ASSEM					
11	XQ-50	磁罗经 Compass	1	ASSEM					
10		方向盘 Steering wheel	1	ASSEM					
9		驾驶员座椅 Pivot Seat	1	F.R.P					
8	271NM306-06-0	释放装置 Release Mechanism	2	ASSEM					
7	271NM306-05	滑架 Skafe	2	ASSEM					
6	271NM306-04	桨叉 Crutchs	2	SUS304					
5		救生浮索 Life Lines	2	ASSEM					
4	H-31501	反光带 Reflector Belt	24						
3	271NM306-03	气垫装置 Duvancy Arrangement							
2	271NM306-02	结构图 Structure Figure							
1	271NM306-01	线图 Lines Plan							

序号	代号	名称	数量	材料	单件重量	总计重量	备注
33	271NM306-07-0	洒水系统 Spray system	1	ASSEM			
32	271NM306-09-0	供气系统 Air supply system	1	ASSEM			
31	271NM306-20-0	操纵系统 Steering system	1	ASSEM			
30	271NM306-19-0	翻绳装置 Painter release unit	1	ASSEM			
29	BSW9812 12V/13	示位灯 Position light	1	ASSEM			
28		遥控绳孔 Remote rope hole	1	ASSEM			
27	271NM306-18	雨水收集器 Rain collector	1	ASSEM			

PROD. NAME: NM58C/F 全封闭救生/救助艇
 NM58C/F TOTALLY ENCLOSED LIFE/RESCUE BOAT

DWG. NAME: 总布置图
 GENERAL ARRANGEMENT

PROJECTION: 第一角投影

DWG. No: 271NM306-00
 DISK FILE: 271NM306-01

MARK QTY SIGNATURE: [Blank]
 DESIGNED MATERIAL ASSEM: [Blank]
 CHECKED WEIGHT(kg) 2780: [Blank]
 VERIFIED SCALE 1:40: [Blank]
 DATE 2016.06 REVISION NO. Rev01: [Blank]

宁波新海业救生设备有限公司
 NINGBO NEW MARINE LIFESAVING EQUIPMENT CO., LTD

借通用件登记
 描图
 校描
 旧底图总号
 签字
 日期