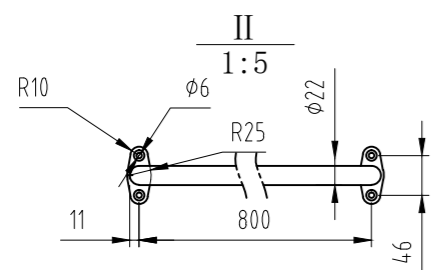
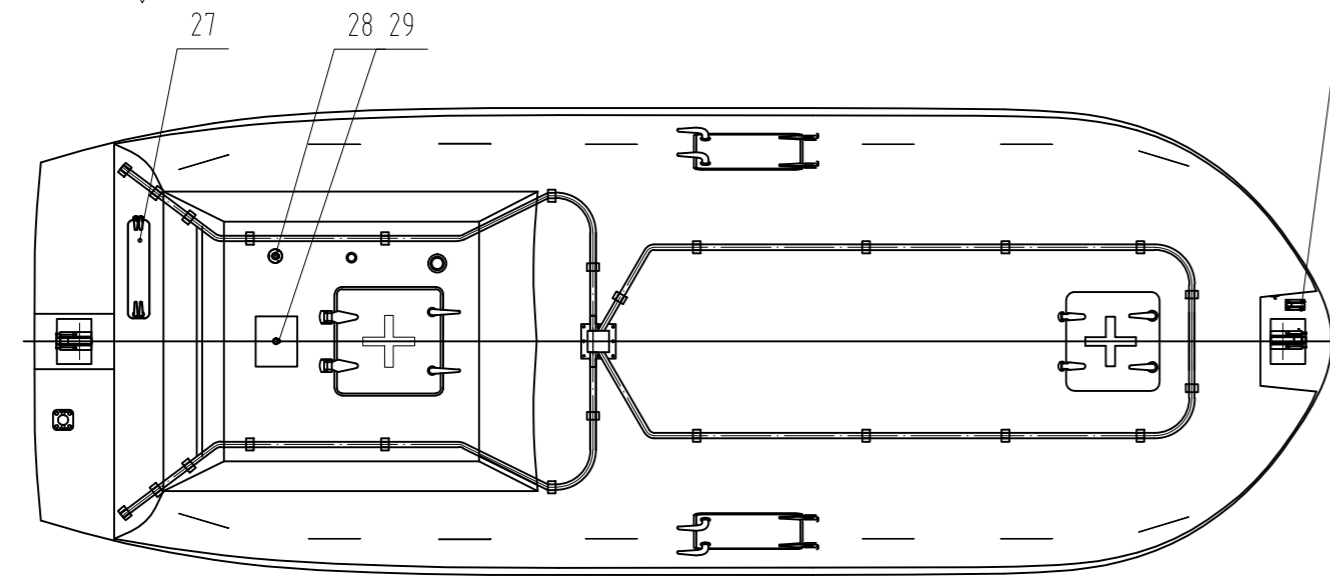
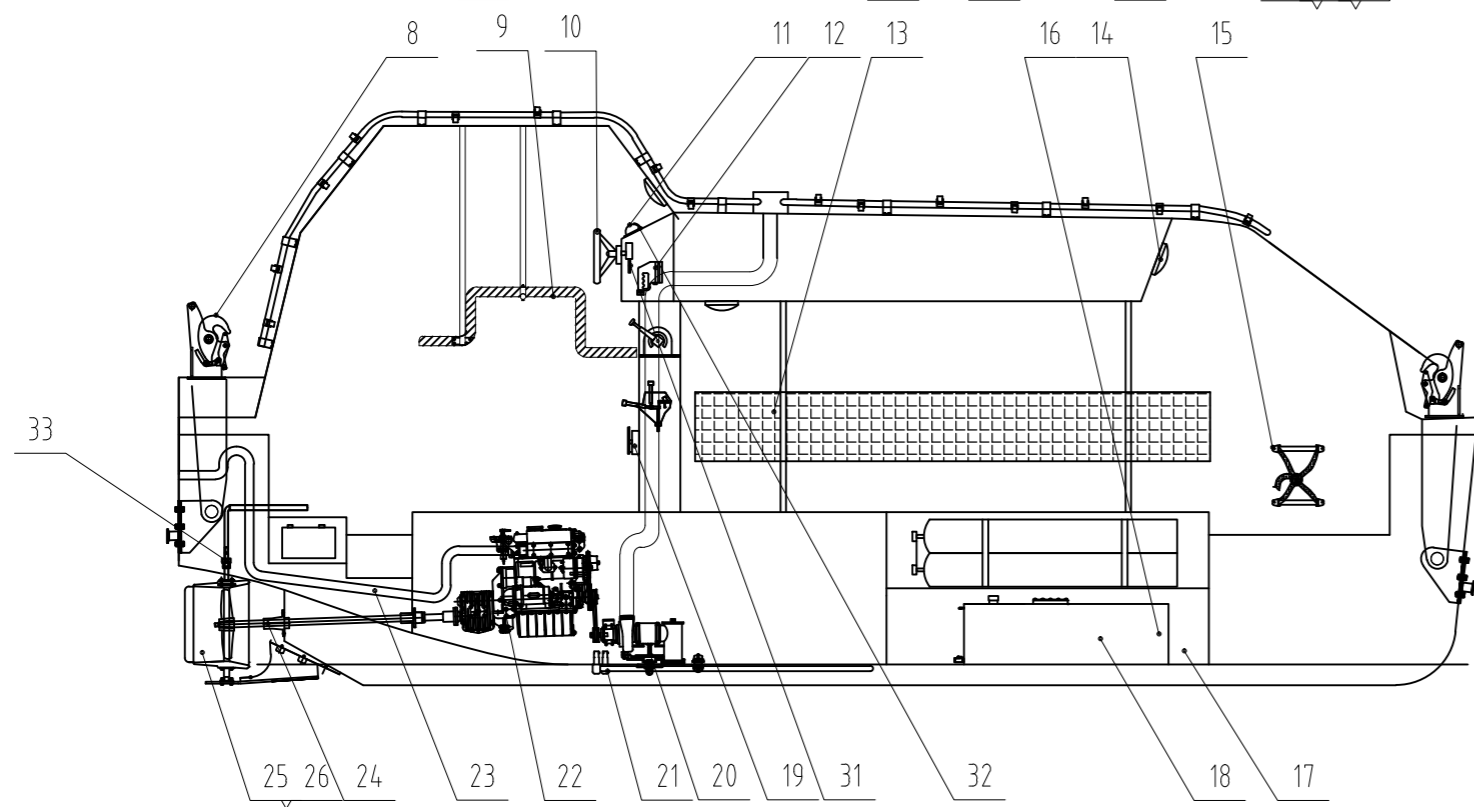
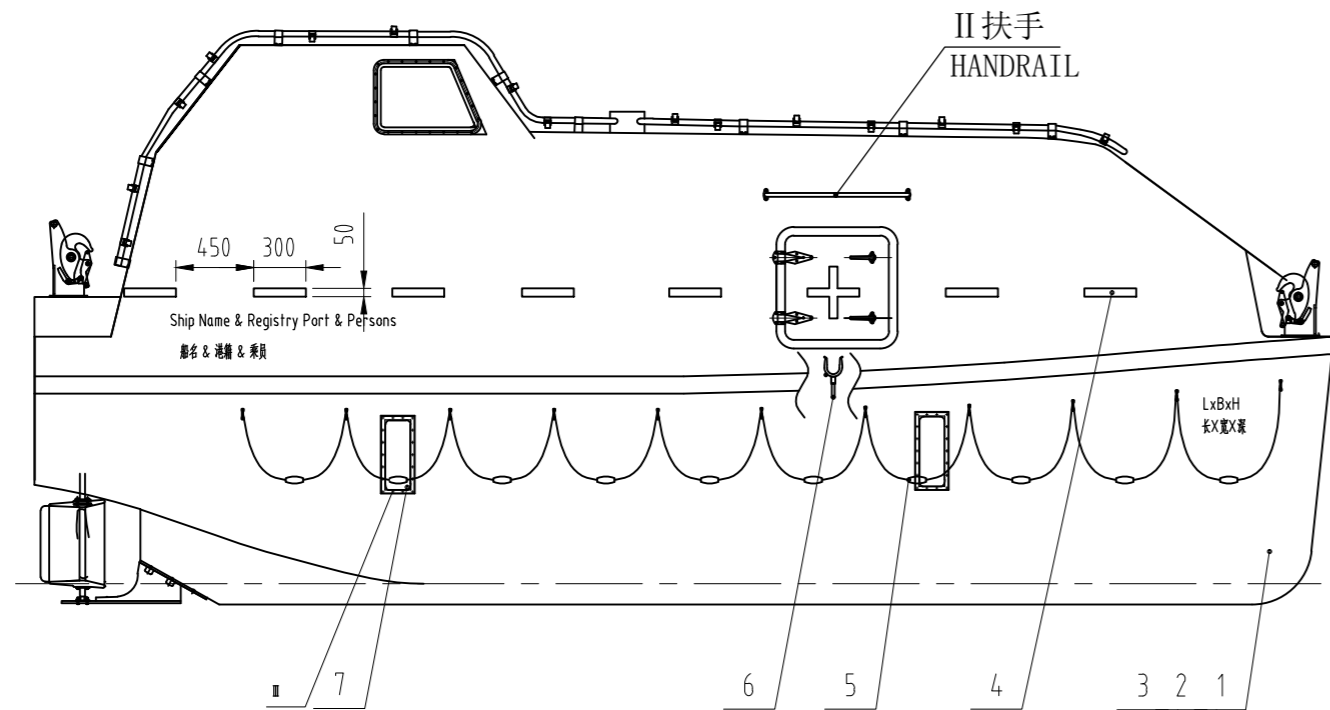
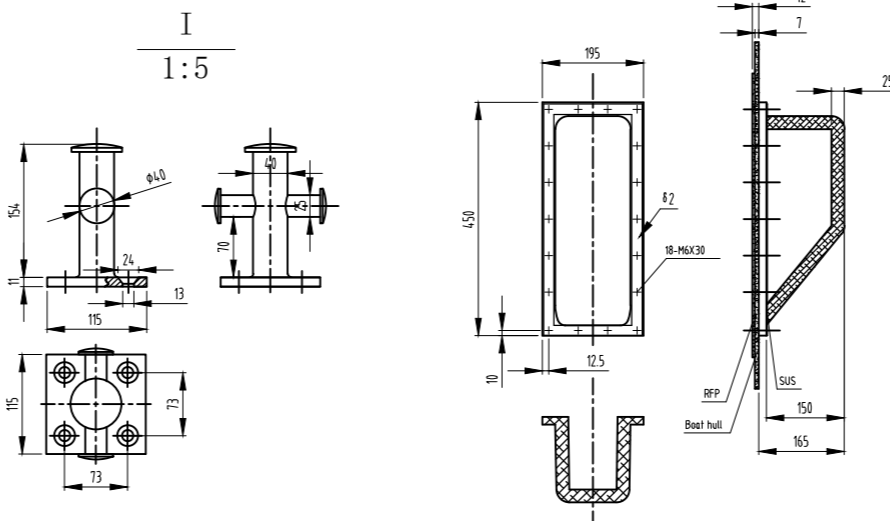
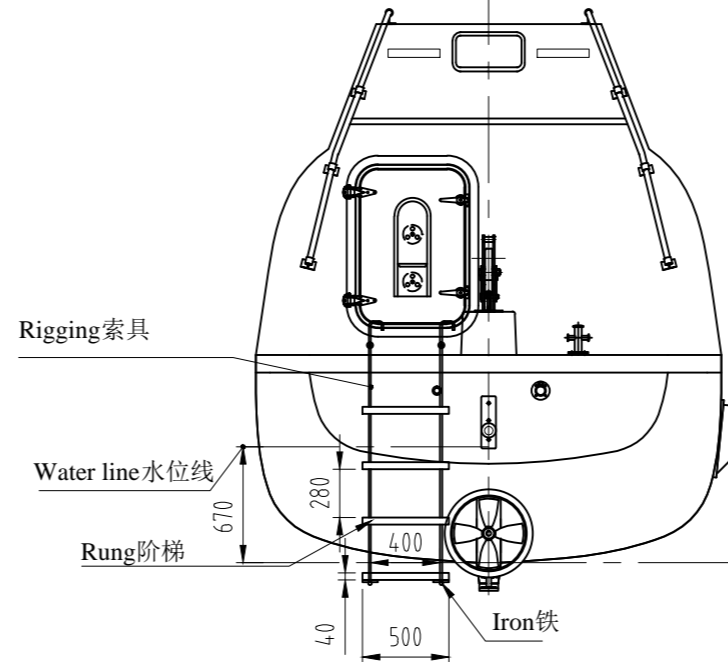
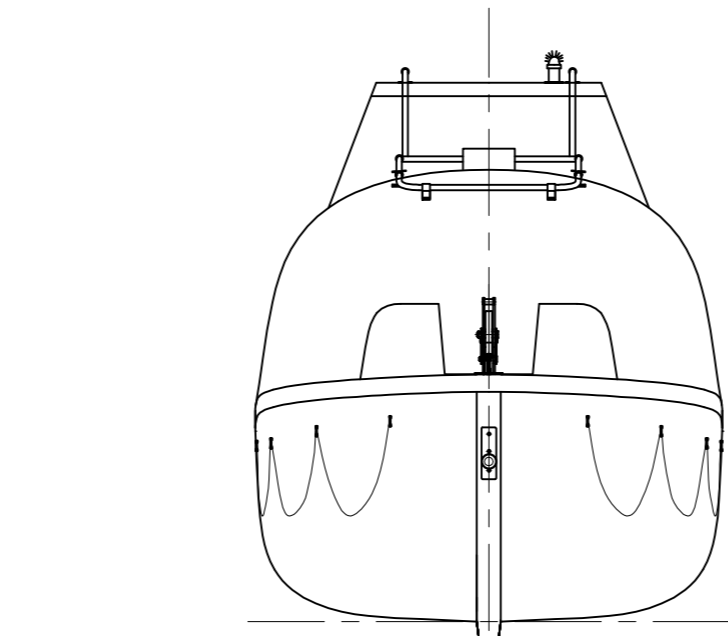


00-202WNLLZ



MANIN MPARTICLAS 主要参数
 Length 船长 7.55m
 Breadth (mid) 船宽 2.78m
 Depth 船深 1.20m
 Height O.A 总高 3.05m
 Hook Distance 钩距 7.10m
 Design draft 设计吃水 0.67m
 Light Weight 空载 3350Kg
 Speed 航速 ≥6 Knots
 As rescue boat 作救助艇时乘员 6 P (A).



NOTE1: Meet the international safety of life at sea, SOLAS convention 96 amendment MSC. 47 (66), MSC. 216 (82), MSC. 317 (89), the international life-saving appliances rules (LSA) MSC. 48(66), MSC. 218 (82), MSC. 272 (85), MSC. 320 (89) amendment, applicable requirements for the life-saving appliances test MSC. 81 (70), MSC. 226 (82), MSC. 274 (85), MSC. 321 (89), MSC. 323 (89) amendment.

NOTE2: The 380J-3 engine is as main engine of the lifeboat, it is able to satisfy the 4.4.6.1 of LSA Code, having whole series of certifications.

注意1: 满足国际海上人命安全 SOLAS 公约 96 修正案 MSC.47(66)、MSC.216(82)、MSC.317(89)、国际救生设备规则 (LSA) MSC.48(66)、MSC.218(82)、MSC.272(85)、MSC.320(89) 修正案, 救生设备试验 MSC.81(70)、MSC.226(82)、MSC.274(85)、MSC.321(89)、MSC.323(89) 修正案的有关要求。
 注意2: 主机 380J-3, BUKH DV29RME YANMAR 符合 4.4.6.1, 有相应的证书。

26	TJ-4701	雷达反射器 Radar reflected instrument	1	ASSEM			
25	271NM203-17-00	门框材料 Arrangement figure of door-windows		ASSEM			玻璃采用钢化玻璃
24	271NM203-16	螺旋桨保护罩 Propeller protection cover	1	SUS			
23	271NM202-15	导流管舵 Vessel rudder	1	F.R.P			
22	271NM202-14-00	推进系统 Power system	1	ASSEM			
21	271NM202-13-00	排气系统 Exhaust system	1	ASSEM			
20		艇机 Lifeboat engine	1	ASSEM			
19	271NM202-12-00	冷却系统 cooling system	1	SUS304			
18		抛板释放器 Lenthic pressure releaser	1	ASSEM			
17	271NM202-11	舷侧排水系统 Bilge draining system	1	ASSEM			
16	271NM202-09-00	燃油系统 Fuel system	1	ASEEM			
15		安全带 Safety belt	60	Nylon			
14	CCD12	舷灯 The light of the ship coping	2	ASSEM			
13	271NM202-08	靠背 Backrest	1	F.R.P			
12	WS97-80H12V/80W	探照灯 Searchlight	1	ASSEM			
11	XQ-50	磁罗经 Compass	1	ASSEM			
10		方向盘 Steering wheel	1	ASSEM			
9		驾驶座位 Steering seat	1	F.R.P			
8	271NM202-06	抛板释放机构 arrangement plan		ASSEM			
7	271NM202-05	滑架 Slippery frame	2	ASSEM			
6	271NM202-04	桨架 Thole	2	ASSEM			
5		救生绳索 Lifesaving floating cable	2	ASSEM			
4	H-31501	反光带 Reflector belt	24	ASSEM			
3	271NM202-03	空气箱布置 Arrangement of air box					
2	271NM202-02	结构图 Structure figure					
1	271NM202-01	线图 Lines plan					

序号	代号	名称	数量	材料	单件重量	总计重量	备注
32	271NM203-00BZ	控制台面板布置图 Pilot control panel	1				
31	271NM203-20-0	操纵系统 Steering system	1	ASSEM			
30	271NM203-19-0	抛板释放器 Pointer release device	1	SUS304			
29	BSW9812 12V/13W	示位灯 Show position light	1	ASSEM			
28		抛板释放 Remote control pull-cable hole	1	ASSEM			
27	271NM203-18	雨水收集器 Rain collector	1	ASSEM			

MARK QTY SIGNATURE MARK QTY SIGNATURE
 DESIGNED MATERIAL ASSEM
 CHECKED WEIGHT(kg)
 VERIFIED SCALE 1:4.0
 DATE REVISION NO. 0

PROD. NAME 7.5M 全封闭救生兼救助艇
 7.5m Totally enclosed lifeboat and rescue boat

DWG. NAME 总布置图
 GENERAL ARRANGEMENT

PROJECTION
 DWG. No. 271NM202-00
 DISK FILE 271NM202-00

NINGBO NEW MARINE LIFESAVING EQUIPMENT CO., LTD