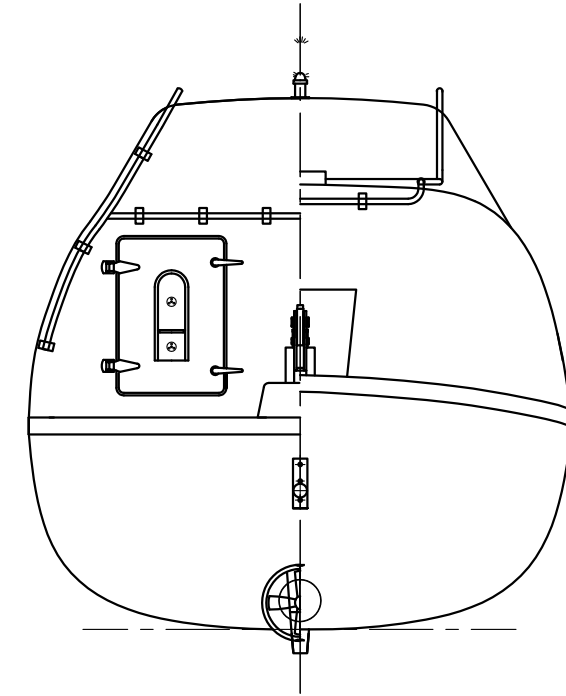
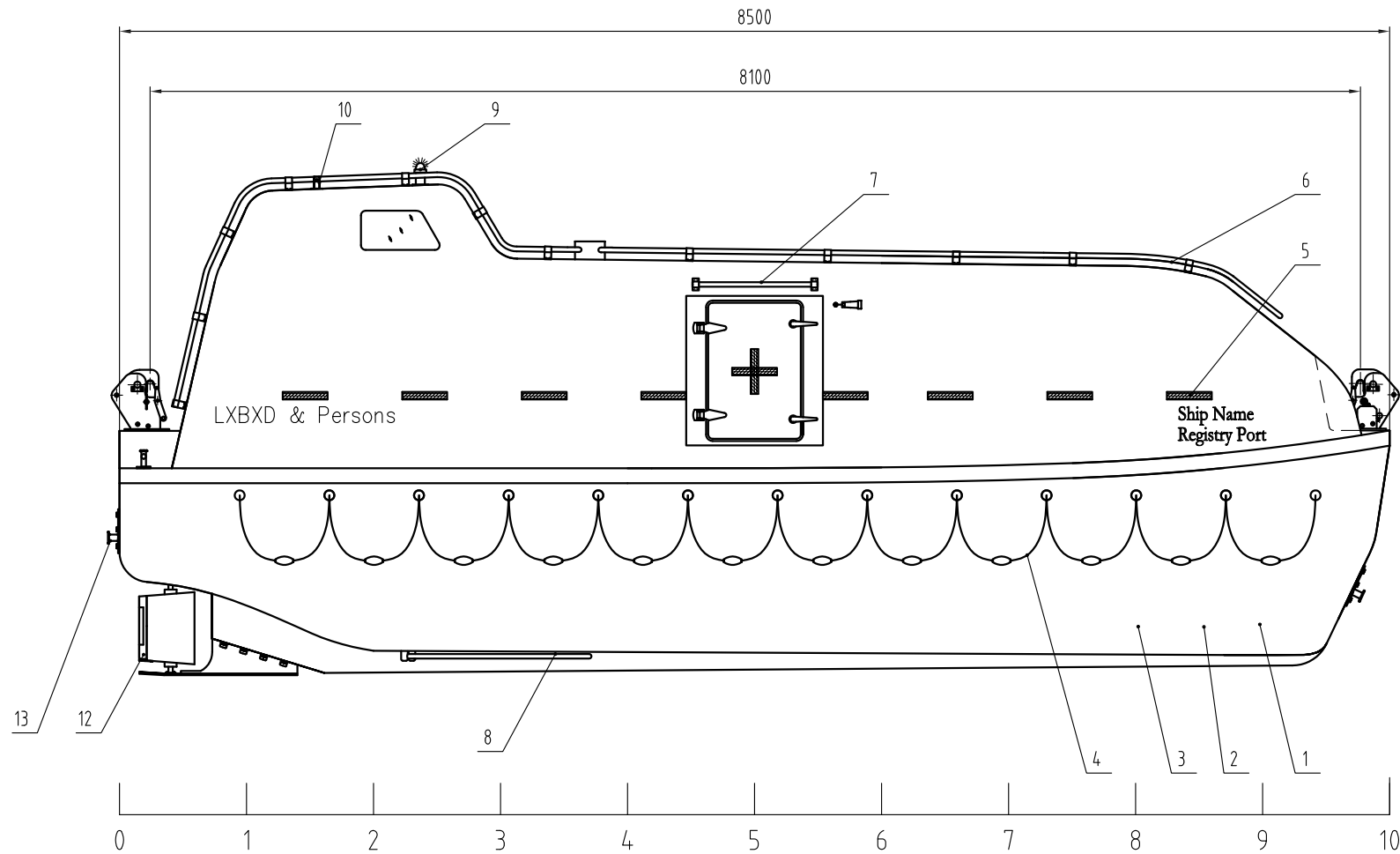


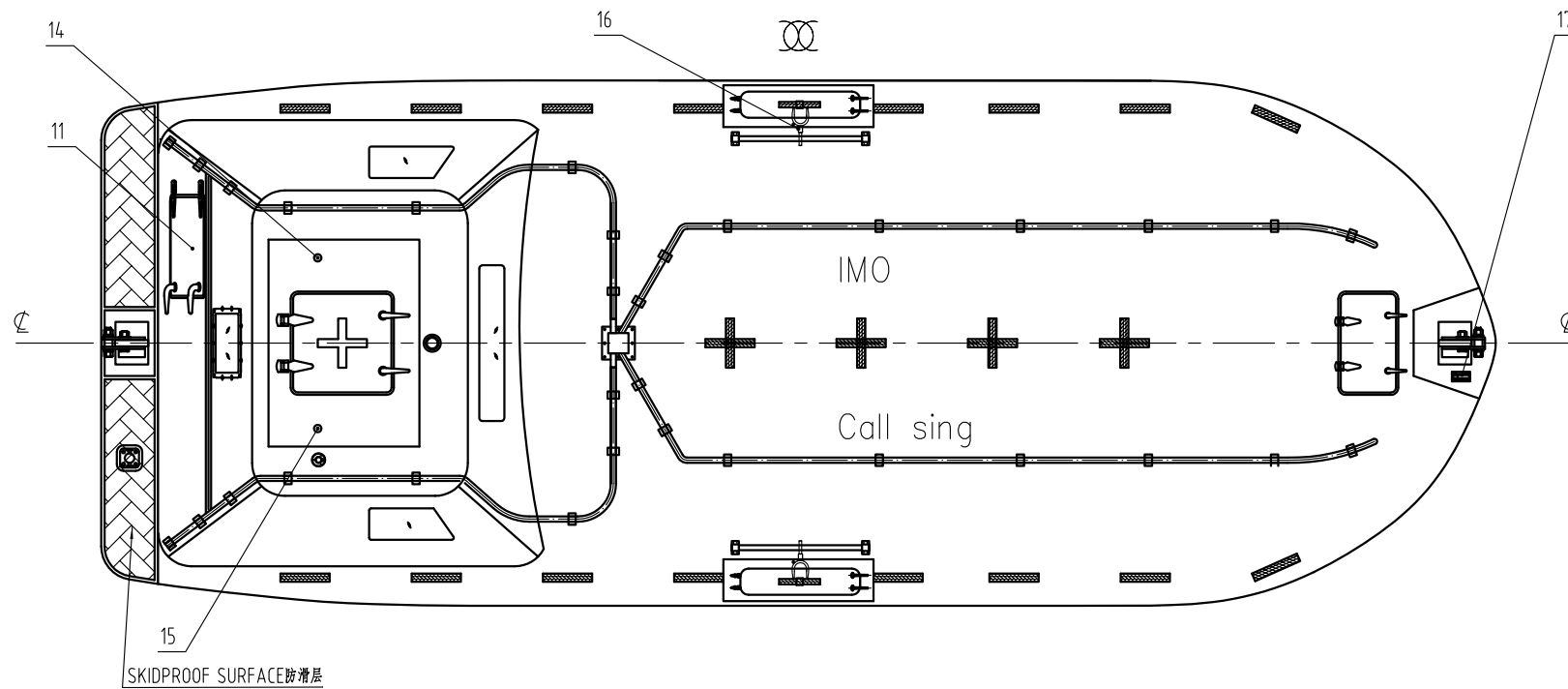
00-107WNLZ



注意1: 满足国际海上人命安全SOLAS公约96修正案MSC. 47(66)、MSC. 216(82)、MSC. 317(89), 国际救生设备规则(LSA) MSC. 48(66)、MSC. 218(82)、MSC. 272(85)、MSC. 320(89)修正案, 救生设备试验MSC. 81(70)、MSC. 226(82)、MSC. 274(85)、MSC. 321(89)、MSC. 323(89)修正案的有关要求。注意2: 主机380J-3, 符合4.4.6.1, 有相应的证书。

NOTE1: Meet the international safety of life at sea, SOLAS convention 96 amendment MSC. 47(66), MSC. 216(82), MSC. 317(89), the international life-saving appliances rules (LSA) MSC. 48(66), MSC. 218(82), MSC. 272(85), MSC. 320(89) amendment, applicable requirements for the life-saving appliances test MSC. 81(70), MSC. 226(82), MSC. 274(85), MSC. 321(89), MSC. 323(89) amendment.

NOTE2: The 380J-3 engine is as main engine of the lifeboat, it is able to satisfy the 4.4.6.1 of LSA Code, having whole series of certifications.



MANIN MPARTICLAS	主要参数
Length	艇长 8.50m
Breadth(mld)	艇宽 3.20m
Depth	艇深 1.25m
Height O.A	总高 3.15m
Hook Distance	钩距 8.10m
No. of persons	乘员 80P
Total Weight	总重 11255Kg
Empty loading	空载 4655Kg
Speed	航速 ≥6 Knots
As rescue boat	作救助艇时乘员 6 P(人)
Diesel engine model	柴油机型号 380J-3

MARK	QTY	REISE DOC NO.	SIGNATURE	DATE	PROD. NAME	8.5M全封闭救生兼救助艇		
DESIGNED			MATERIAL	ASSEM		8.5m Totally enclosed lifeboat and rescue boat		
CHECKED			WEIGHT(kg)		DWG. NAME	总布置图		
CHE. OF STA.			SCALE	1:30		General arrangement		
VERIFIED			DATE			PROJECTION		
APPROVER			1/2				DWG. No.	271NM401-00
宁波新海业救生设备有限公司 NINGBO NEW MARINE LIFESAVING EQUIPMENT CO., LTD.						DISK FILE		

