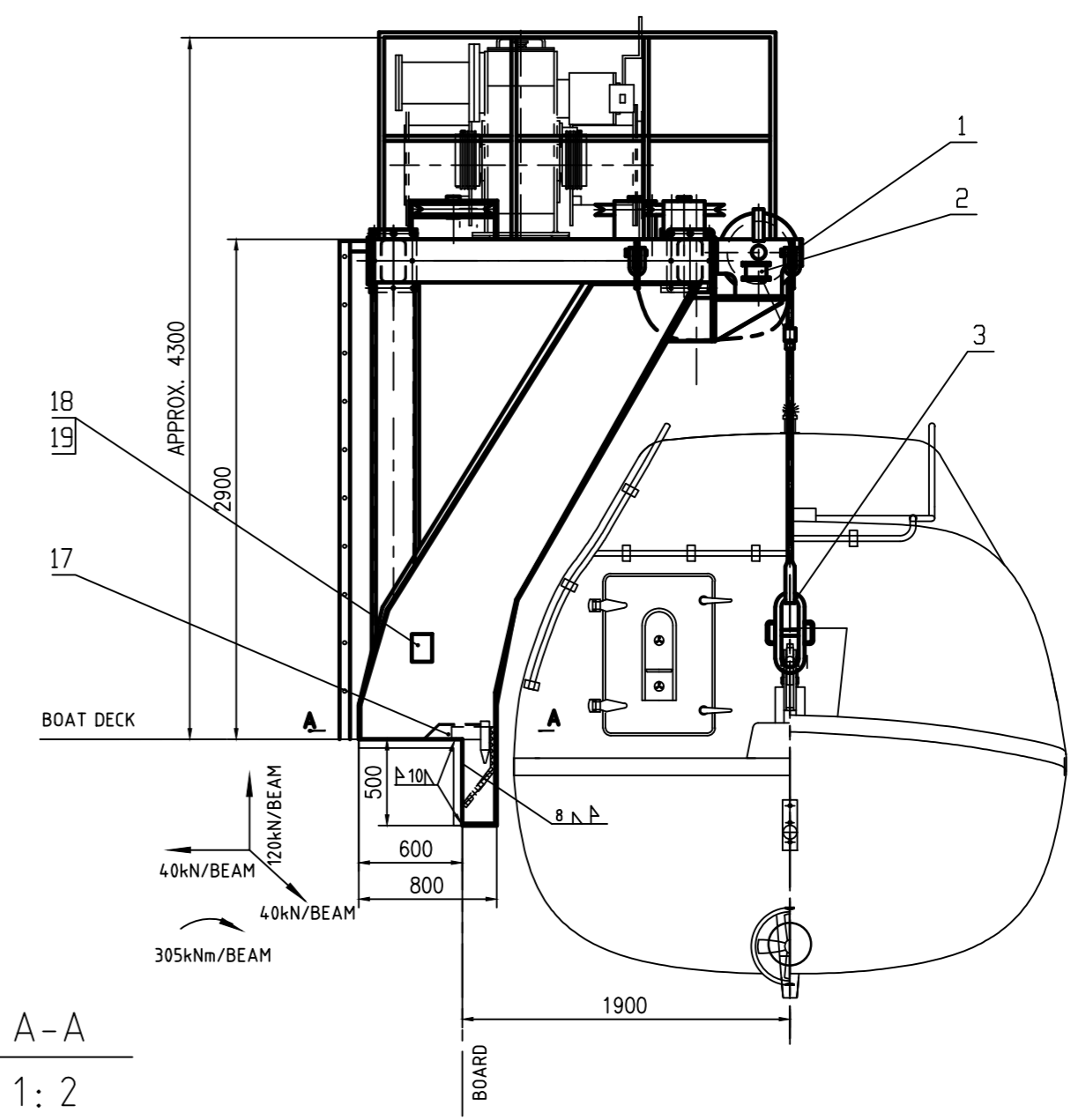
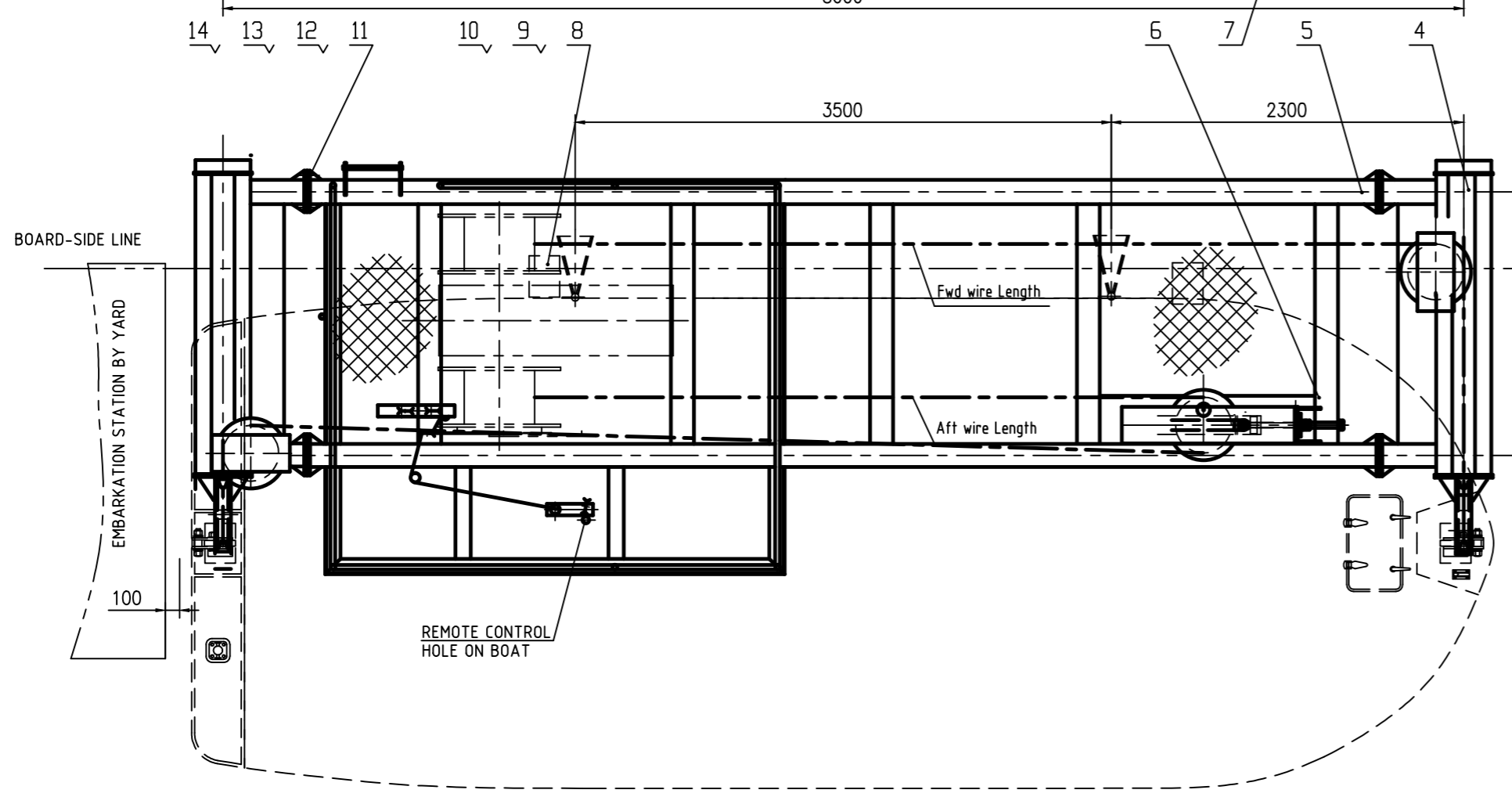
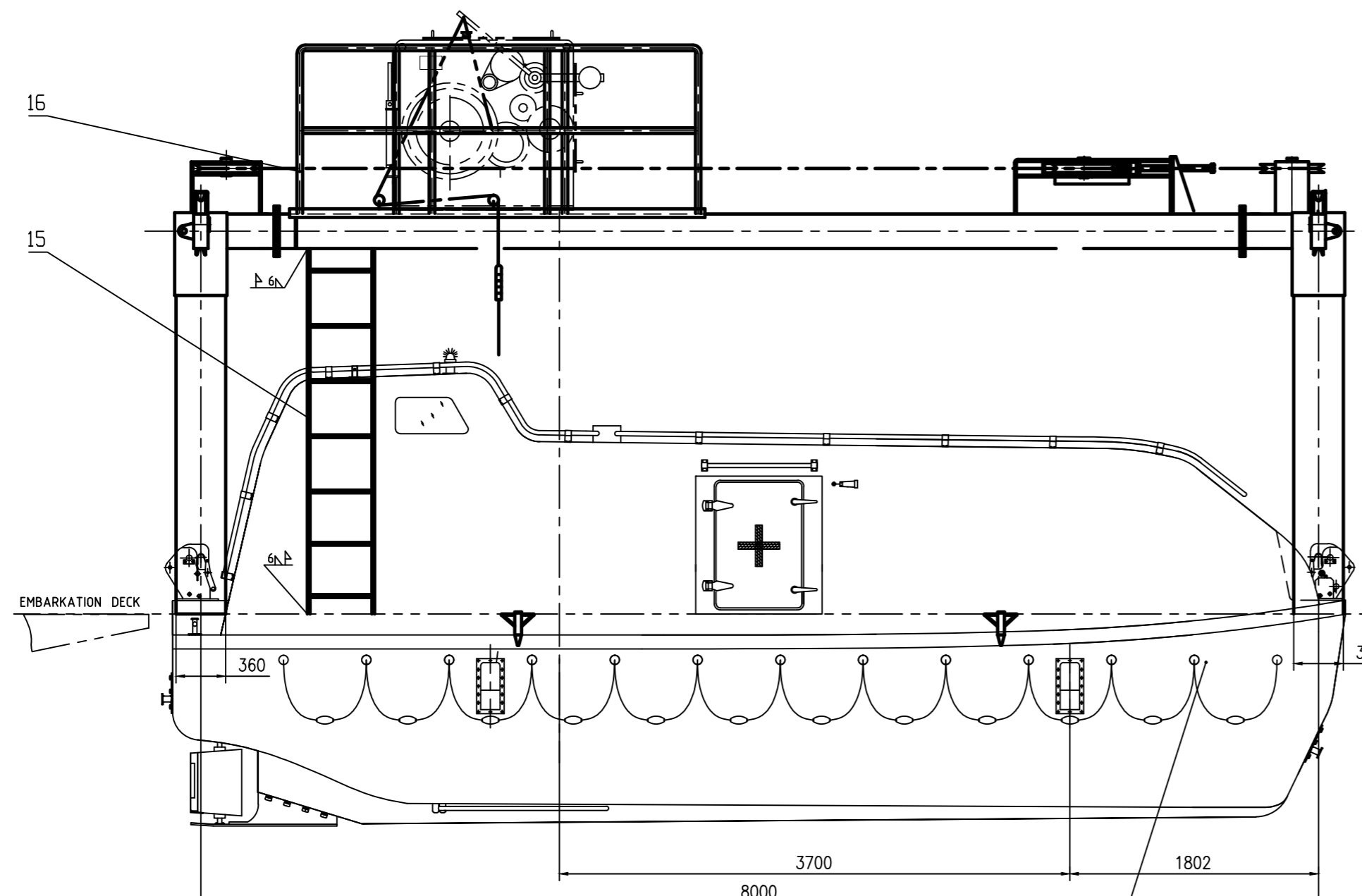
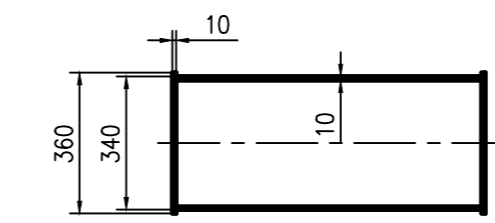


00-1EZWN5LZ



A-A
1:2



主要技术参数 MAIN TECHNICAL DATA			
最大工作负荷	MAX. WORKING LOAD :	120kN.	
最大起升负荷	MAX. HOISTING LOAD :	110kN.	
钢丝绳规格	BOAT FALL SIZE :	ø28, GALV.-NO-ROTATE MIN. BREAKING LOAD=429KN	

技术要求

1. 本图所示为右式艇架, 左式艇架对称制造.
2. 本吊艇架满足《海上移动式钻井平台构造和设备规则(2009)》和SOLAS最新要求.
3. 标记 ∇ 由船厂焊接.

TECHNICAL REQUIREMENTS

1. THIS DRAWING SHOWS STARBOARD SIDE DAVIT.
2. THE DAVIT IS IN ACCORDANCE WITH 2009 MODU & THE REQUIREMENTS OF AMENDMENTS TO SOLAS 1974.
3. MARKED ∇ SHOULD BE WELDING BY SHIPYARD.

序号	代号	名称	数量	材料	单件重量	总计重量	备注
19	2.5X10 GB867-86	铆钉SCREW	4	ML2			
18	215NM231-09	铭牌NAME PLATE	1	1Cr18Ni9Ti/H62			
17	215NM231-10-0	固握装置GRIPPING UNIT	2	ASSEM	16.5	33	
16	215NM231-09	围栏RAIL	1	ASSEM		95	
15	215NM231-08-0	梯子LADDER	1	ASSEM		45	
14	24 GB97.1-85	平垫圈WASHER	4.0	A200			
13	24 GB93-87	弹簧垫圈SPRING WASHER	4.0	65Mn			
12	M24 GB6170-86	螺母NUT	4.0	8.8			
11	M24X90 GB5782-86	螺栓BOLT	4.0	8.8			
10	30 GB97.1-85	平垫圈WASHER	10	A200			
9	30 GB93-87	弹簧垫圈SPRING WASHER	10	65Mn			
8	M30X90 GB5782-86	螺栓BOLT	10	8.8			
7	215NM231-07	艇架(B)BOAT SUPPORT (B)SIDE	2	ASSEM	10	20	
6	215NM231-06-0	艇架(B)BOAT SUPPORT (B)SIDE	1	ASSEM		472	
5	215NM231-05-0	绞车平台PLATFORM	1	ASSEM	2325	2325	
4	215NM231-04-0	吊艇臂DAVIT ARM	2	ASSEM	976	1952	
3	215NM231-03-0	吊艇索BOAT FALL	2	ASSEM	160	320	
2	215NM231-02-0	限位装置LIMITED UNIT	2	ASSEM	6	12	
1	215NM231-01-0	艇架(B)BOAT SUPPORT (B)SIDE	2	ASSEM	11	22	

MARK QTY	SIGNATURE	MARK QTY	SIGNATURE	PROD. NAME	PD120 平台吊
DESIGNED	MATERIAL	ASSEM		PD120 PLATFORM DAVIT	
CHECKED	WEIGHT(kg)	5296		总图	
VERIFIED	SCALE	1:25		GENERAL ARRANGEMENT	
DATE	2016.06	REVISION NO.	Rev01	DWG. No 215NM231-00	
NINGBO NEW MARINE LIFESAVING EQUIPMENT CO., LTD.				PROJECTION	DISK FILE 215NM231-00