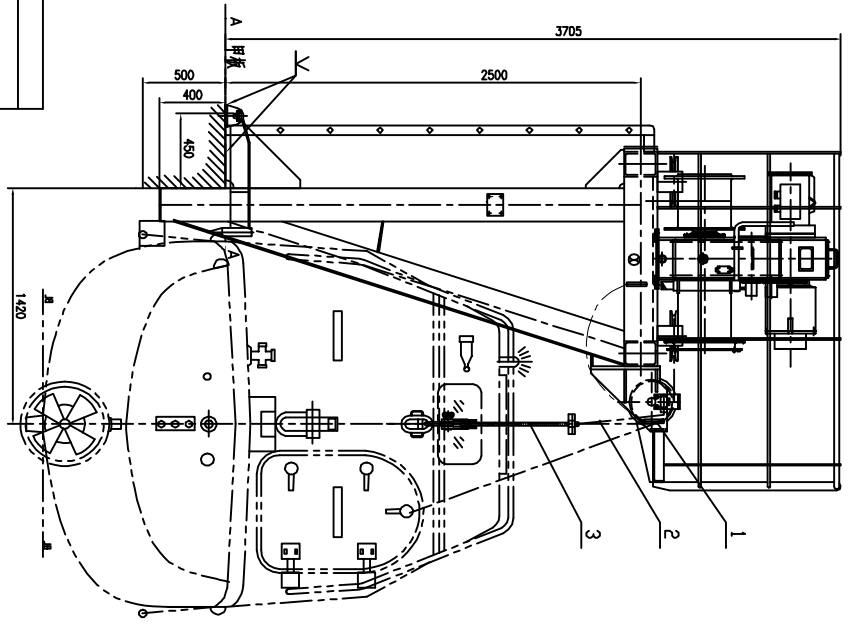
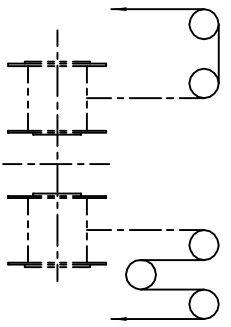


$M_x \approx 85kN \cdot m / BEAM$
 $M_y \approx 36kN \cdot m / BEAM$
 $F_x \approx 15 kN / BEAM$
 $F_y \approx 4.0 kN / BEAM$
 $F_z \approx 18 kN / BEAM$

Max. working load	50 kN
Max. hoisting load	4.0 kN
Min. lowering load	24 kN
Designed condition	Heel 20° + Trim 20°
Wire rope	16mm dia., 18x19 Galvanized and non twist type, breaking load > 150kN



技術要求
TECHNICAL REQUIREMENTS
 1. 結構材料應在船殼外殼。
 THIS DRAWING SHOWS RIGHT DAVIT LEFT DAVIT TO BE SYMMETRIC TO THIS.
 2. 本圖應以船殼外殼材料為準(1999)MSC.47(66)及MSC.48(66)為準。
 THE DAVIT IS STIFFENED WITH 89 MOU & MSC.47(66) & MSC.48(66).

NO.	CODE	NAME	QTY	UNIT	REMARK
11	HWPSA-04	ROPE FASTENING UNIT	2	ASSEMBLY	
10	HWPSA-04	ROPE TACKLE	2	ASSEMBLY	
9	HWPSA-09	ROPE LADDER	1	ASSEMBLY	

NO.	CODE	NAME	QTY	UNIT	REMARK
8	HWPSA-04	REMOTE CONTROL UNIT	1	ASSEMBLY	
7	HWPSA-07	ROPE HANDRAIL	1	ASSEMBLY	
6	HWPSA-06	ROPE WINCH PLATFORM	1	ASSEMBLY	
5	HWPSA-05	ROPE ADJUSTED TACKLE	1	ASSEMBLY	
4	HWPSA-04	ROPE DAVIT ARM	2	ASSEMBLY	
3	HWPSA-03	ROPE BOAT FAL CHAIN	2	ASSEMBLY	
2	HWPSA-02	ROPE LIMIT UNIT	2	ASSEMBLY	
1	HWPSA-01	ROPE MAINTAIN UNIT	2	ASSEMBLY	

NO.	CODE	NAME	QTY	UNIT	REMARK
	HW-PL-03	PLATE			
	HW-PL-04	PLATE			
	HW-PL-05	PLATE			

NO.	HWPSA-00	GENERAL ARRANGEMENT
DATE		
SCALE	1:5	
QTY.		